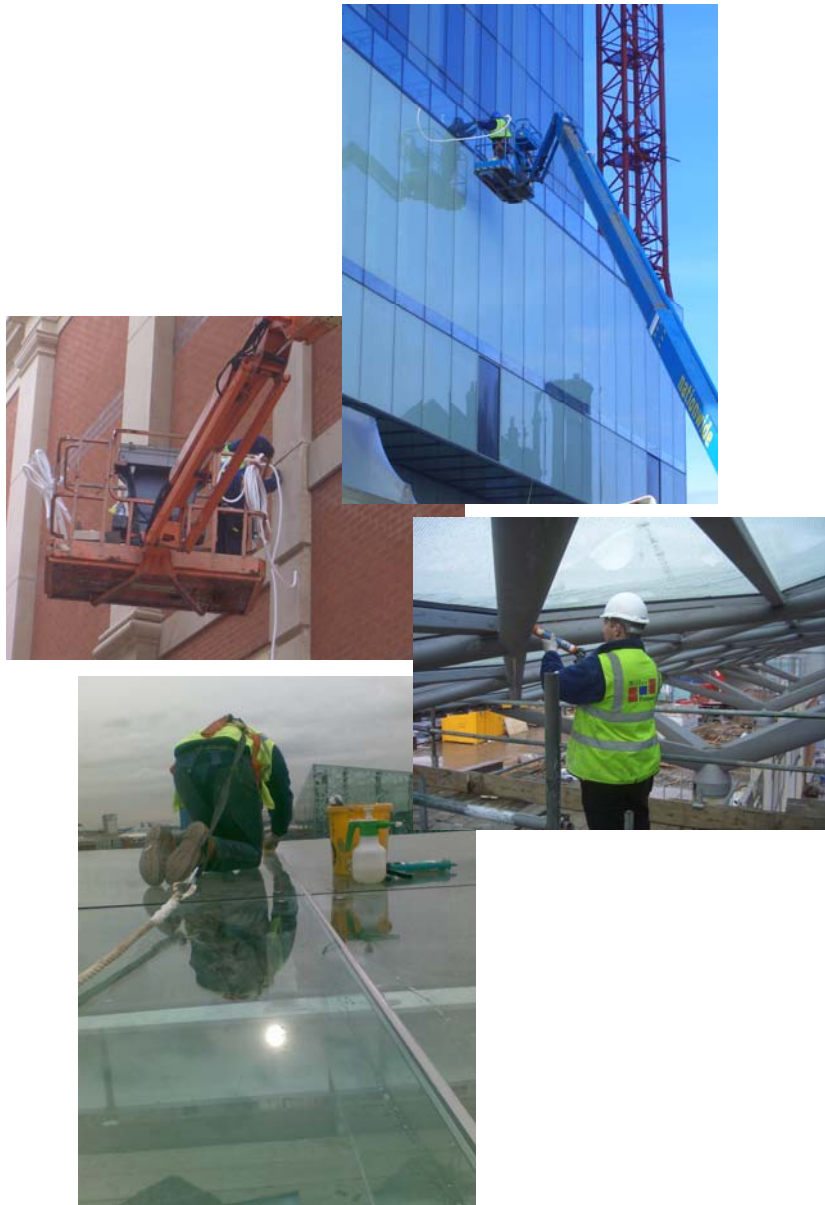
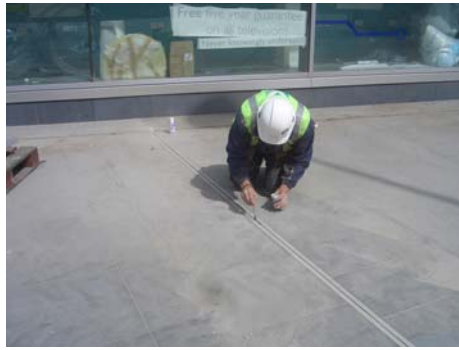


Sealant Case Studies



Delicate Floor Joints (vetter final ops 001)



The picture below shows an operative preparing a floor joint. This work was carried out at the **Paradise Project in Liverpool**. A major city centre re-development that **Miller Pattison** have been involved with for three years.

The pavement is natural stone granite. This means that material selection is critical, The sealant must not leach into the stone and stain it. This is a common failure when companies **do not** take the situation into consideration and use a cheap product for the work. The joint has had polyethylene joint backing inserted also you can see the edges have then been protected with masking tape.

The operative is applying **primer** to the joint faces. The tape prevents staining from the primer and the subsequent sealant application and tooling. The sealant is applied and tooled flush to the surface of the stone. The masking tape is then removed.

Trafford Centre - Manchester



The photo in this case study shows work being carried out from a hydraulic boom (or cherry picker). This work was carried out to the existing Trafford Centre.

The joint is first primed and the first lot of joint backing is inserted to the back of the joint. Then the first seal is applied. Following sufficient time, the second seal is applied over a second joint backer rod.

The silicone is tooled to a flat finish, slightly recessed from the face of the pre-cast concrete panels. All of this work was carried out from cherry pickers or scissor lifts. Due to programme delays, the work was ultimately completed on a night shift basis.

Sealant work on a building in Leicester city centre



Here are 2 pictures from a contract that we recently completed in **Leicester city centre**. There was a large volume of silicone application to glass facades and internal screens on this contract. As can be seen, we also sealed the roof of the atrium as well as the glass walls.

This car park building was nine stories high and the work was done from cherry pickers and a super large scissor lift!

Note the use of the harness and safety lanyard as well as gloves etc because we take health and safety very seriously. One photo shows a second operative working below, for this reason these particular roof joints had to be applied in one operation. After solvent cleaning, the sealant was applied to the full depth of the joint from above. The joint was then tooled flush by both operatives at the same time. Note the quality of finish on the grey silicone that has been applied and tooled.

Royal Mail Hub – East Midlands Airport



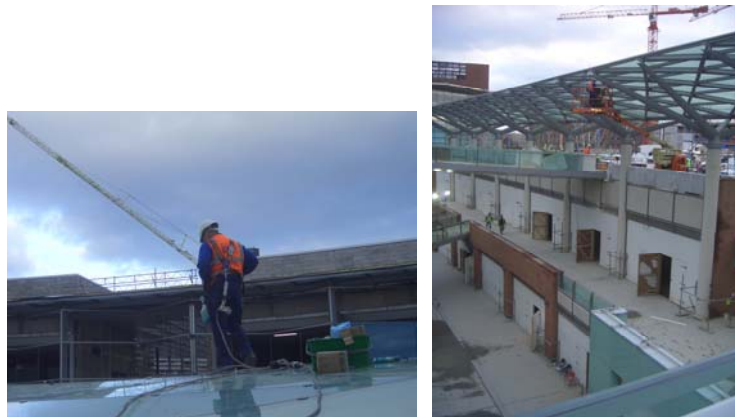
The first shot shows one of our operatives using an air powered gun for the application of floor grade sealant to the **new Royal Mail hub** contract at **East Midlands airport**.

We also had to carry out concrete repair operations to this contract using low viscosity injection epoxy resin to cracks in the floor slab and epoxy mortar to make good defective concrete.

The second shot shows one of our operatives sealing the steel structure under a glass canopy at the **Paradise Project in Liverpool**.

This exercise was to seal large unsightly gaps and prevent birds from nesting in the voids between the steel sections.

Eiffel at the Paradise Project in Liverpool



We had to organise a man-safe system from a specialist company. This was for the operatives to attach their harnesses to, which permitted movement around the canopy yet provided a safe working environment.

As each section was completed, we had to move the man-safe system along the canopy steel. One photo shows an operative in a cherry picker that was on the top deck of the building. He is under the canopy and moving into position to re-fix the safety lines further along the steel structure.

We also had to remove all the fixing plates, one at a time, seal the joint below and then re-fix the plates

The building below comprises of two levels of shops, service corridors and a multi-story car park. The whole structure is topped by a public park with trees, lawns and resin bound aggregate paving and paths. There are also some glass lift shafts that project up to the park

level from the car park levels below.

Additionally, Miller-Pattison carried out all the sealing to the glass lifts, glass stairwell feature roof, resin floor joints, dwarf wall natural stone joints and the sandstone parapet joints and handrails.

Hilton Hotel - Manchester



This first photo shows one of our operatives applying top grade structural silicone to the external glass roof and wall at the recently completed Manchester Hilton hotel. The section that he is working on is actually the swimming pool!

This feature actually extends out from the main structure of the building. Miller Pattison sealed all the glass roof *and* surrounding glass wall joints throughout the whole building.

Warrington Golden Square Shopping Centre



Miller Pattison operatives prepare concrete floor joints prior to sealing with fuel proof two part epoxy polyurethane sealant.

This work was done on a night shift basis, as the Warrington Golden Square shopping centre was then open and the work had not been done by the concrete contractor. The work entailed forming many of the joints and repairing the concrete before sealing could take place. Note the full use of PPE and the independent water supply to eliminate the dust generated by the Still saw.

The material was chosen also due to the quick cure rate, so that the service road use was not impeded in any way.